

# Programmable Logic Control Trainers

Educational Training Equipment for the 21st Century

Bulletin 295-102D

## H-PLC-5-AB Programmable Logic Control Trainer

### Purpose

The **Model H-PLC-5-AB** Programmable Logic Control Trainer provides students with hands-on experience, utilizing standard commercially available programmable logic controllers interfaced with actual input and output devices. The student gets hands-on experience on interconnection wiring; general programming information; ladder diagram programming; programming trainers, counters, shift registers, LET instructions, IF instructions; and specific programmers operations including self test, error messages and codes.

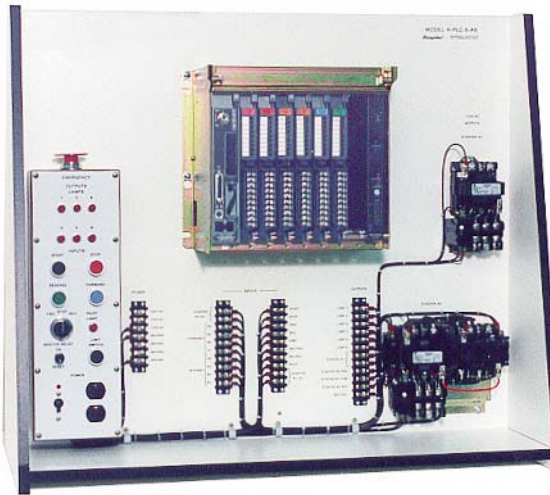
### Description

These state-of-the-art Allen-Bradley PLC-5 controllers are mounted in a 1771 Universal I/O chassis, mounted on a **Model H-PLC-PPA** A-Frame Peripheral Panel. Accessory devices surround the PLC, enabling the student to perform complete closed loop analysis without having to interface any additional outside components.

### Specifications

#### H-PLC-PPA A-Frame Peripheral Panel:

- I/O device surface enclosure with:
  - four (4) pushbuttons
  - one (1) selector switch
  - one (1) pilot light
  - one (1) limit switch
  - one (1) duplex
  - one (1) main circuit breaker, 15A with pilot light
  - six (6) output pilot lights
  - one (1) emergency disconnect pushbutton
- Terminal strips (4)
- Three-phase magnetic starter for control of Hampden rotating machines or other devices
- Three-phase magnetic reversing starter for control of Hampden rotating machines or other devices
- Power cord 3/c #16 wire eight-foot long with cord holder



**MODEL H-PLC-5-AB** Programmable Logic Control Trainer  
with optional Programming Software and optional Personal Computer  
**Dimensions:** 31-1/2"H x 37"W x 18"D

#### PLC-5 Programmable Controller:

This controller shall be Allen-Bradley and consist of the following components:

- 1785-L20B processor PLC-5/20
- 1771-A2B chassis
- 1771-P4S power supply with interconnection cable
- 1771-IA AC-DC 8-input modules, 120V (2)
- 1771-OA 120V AC 8-output modules (2)
- 1784-PKTX communication module
- 1770-XYC battery

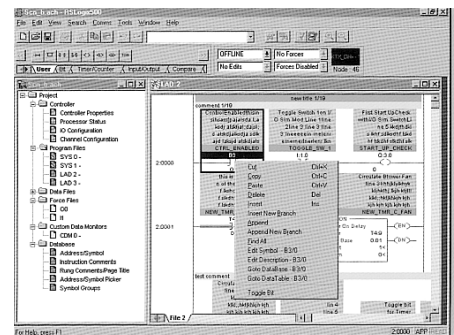
#### Input Voltage:

120/240VAC, 1Ø, 50/60Hz

A typical configuration for the Allen-Bradley PLC-5 Family is shown below; several of the optional components pictured can be mounted in the 1771 Universal I/O chassis on the Hampden **H-PLC-5-AB** trainer; others attach via cables.

### Options

- H-PLC-5-RS-LOGIC** Advanced Programming RS-LOGIC Software option, with UIC Interface and Programmer Cable, which will allow ladder programs to be created and edited with a computer
- Model H-PLC-CS** Pentium-based Computer System
- Model H-PLC-PO** Printer



Typical student programming screens

All Hampden units are available for operation at any voltage or frequency

**Hampden**  
ENGINEERING CORPORATION